

Global Fund TB Public Private Mix (PPM)

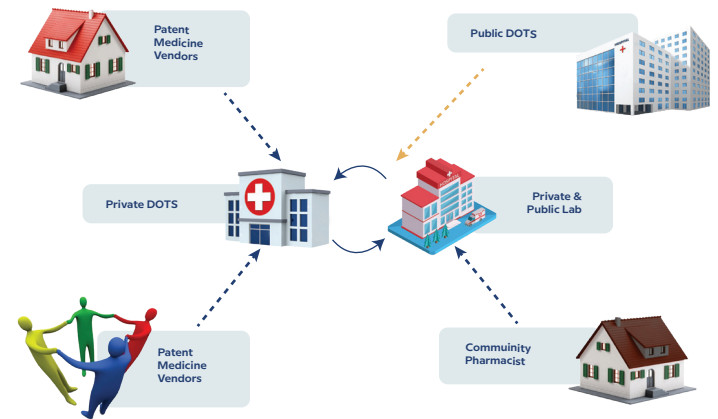
Making Strides in Tuberculosis (TB) Care

The Institute of Human Virology Nigeria (IHVN) was selected by the Country Coordinating Mechanism and the Global Fund in 2019, as the first Principal Recipient of TB Public Private Mix (PPM) scale-up. In Nigeria, private healthcare providers account for more than 60% of care-seeking; in 2017, only 2.7% of private health providers were offering TB services.

The GF TB PPM Project is a strategic initiative with the objective of engaging all private health care providers in the fight against tuberculosis using international healthcare standards. The first cycle of the grant ran from 2019-2020, while the second cycle will run for three years (2021-2023).

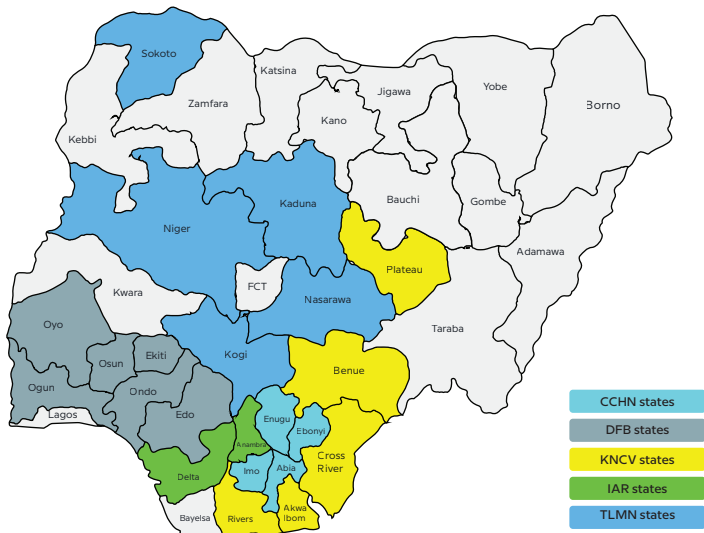
The grant aims to reduce the burden of tuberculosis by complementing and accelerating the ongoing activities implemented by the Nigerian government and other partners.

Although Nigeria adopted GeneXpert as the first point of diagnosis for TB in 2016, *drug susceptibility testing (DST) coverage remains suboptimal. This grant aims to increase DST coverage from 58% in 2019 to 75% by 2023.*



Operations of the Global Fund PPM Project

Performance-based financial and material incentives system for private providers is being used as a motivation for healthy competition among these providers.

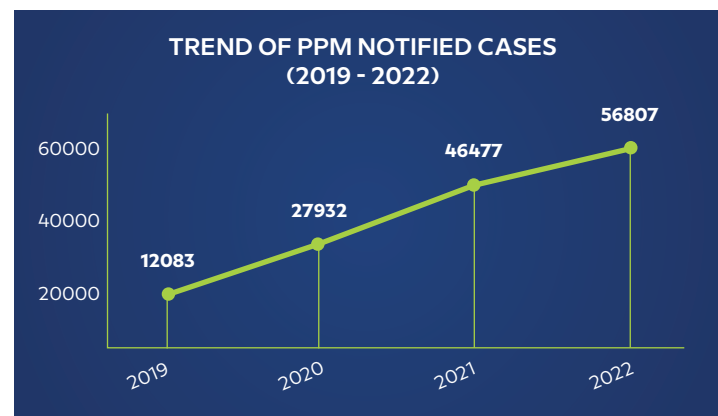


Map showing the states and IHVN partners implementing the GF-PPM project

The National coverage activities under the grant include maintenance of specialized drug resistant tuberculosis treatment centers, tuberculosis reference laboratories, scale-up of the NigeriaQual Tuberculosis program (to ensure continuous quality improvement in the provision of TB services nationwide), TB specimen transportation, and optimization of GeneXpert equipment.

Global Fund PPM Project Achievements (2019-2022)		
S/No	Activity	Numbers
1	Faith-Based Organizations engaged to provide tuberculosis services	497
2	Private-for-profit organizations engaged to provide tuberculosis services	2,743
3	Private laboratories that provide tuberculosis services	203
4	Community pharmacies and patent medicine dealerships engaged to provide tuberculosis services	14,196
5	TB case notification by private health providers	143,299

In four years, there has been an increase in the contribution from PPM to National notification from 19% in 2019 to 33% in 2022.



PPM notification in 21 GF-supported states 2019